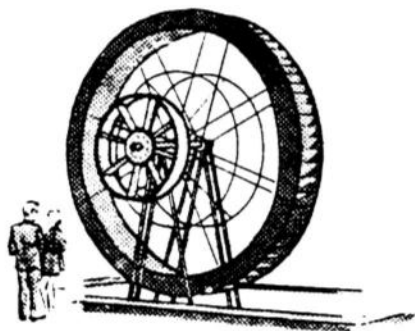


# BULLETIN



Patrons: Mr. Harold Mair, O.A.M.  
Mr. Ian Glachan

President: Mr. John Craig (02) 6025 6041

Secretary: Mr. Ron Braddy (02) 6021 2038  
P.O. Box 822, Albury, N.S.W. 2640

Meetings: Commercial Club, Dean Street, Albury.  
8.00 p.m., 2nd Wednesday of the month

Albury Regional Museum (02) 6051 3450  
Turks Head, Wodonga Place, Albury  
Open every day, 10.30 a.m. to 4.30 p.m.

Subscriptions: Individual Member \$20  
Corporate Member \$50

Registered by Australia Post, PP.225170/00019

ISSN 0813 6645

## NEXT MEETING

**8pm Wednesday June 9**  
Commercial Club,  
Dean Street, Albury.

**AGM AGENDA**  
Page 6

**BULLETIN 436**  
**JUNE 2004**

**ANNUAL GENERAL MEETING** followed by the

Monthly Meeting:- *Jane Longhurst will briefly talk about the Noreuil Park Development Report*

## FUTURE EVENTS

### ① Albury Regional Museum

18 June-27 July.  
Exhibition.  
*More Than Dinosauers:*  
*Evolution of Life.* An  
Australian Museum  
Travelling Exhibition.

23 June, 7-8pm. A  
Talk with La Trobe  
Uni Lecturer, Martin  
Fussell:  
*Palaeontology of*  
*South East Australia.*

② August 7<sup>th</sup>.  
*Introduction to*  
*Archives:* Felldtimber  
Community Centre,  
Ritter Rd Wodonga.  
Register by 23/7/04,  
Ph 03 9348 5757  
-Laura Daniele.  
(\$16.50)

## REPORT ON THE MAY MEETING



## ALBURY AMBULANCE SERVICE

The Society was addressed by **Geoff Kent**, Branch Manager of the Albury Ambulance Service. *Geoff talked about the History of the Ambulance Service in Albury.*

### ① **ABOUT GEOFF KENT:**

*Geoff is married with three daughters (7, 18 & 20 yo), & a son (10yo). The importance of history was highlighted when his son had to ring his grandmother in Sydney about a school project. He couldn't understand that she didn't have a computer, internet, or mobile phone!*

Not many records can be found of the Albury Ambulance Station. **Historical information** is being obtained from retired officers, and Border Mail archives. However, when the Deniliquin control room closed, significant records were moved to the Albury station.

The staff of the **previous Albury stations** have all retired, moved on wherever. Though today's staff are young, they have some of the longest serving officers in the state. In Sydney, the average service of the officer is about three years

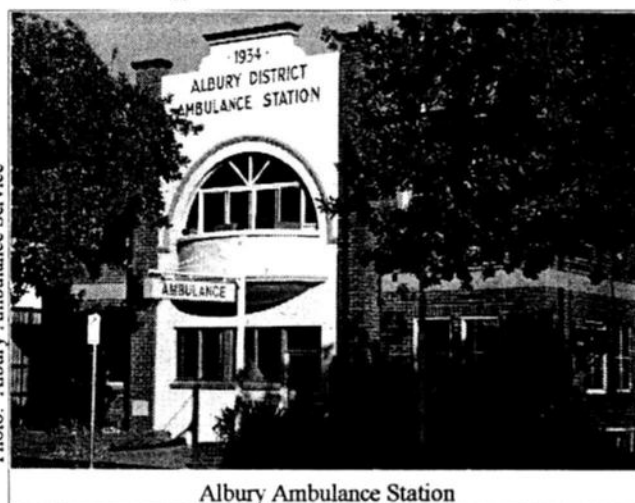


Photo: Albury Ambulance Service

Albury Ambulance Station

# ALBURY AMBULANCE SERVICE

<<<

(& regarded as senior). In Albury, the average ambulance service officer has served for about ten years, & most are on twenty years service & quite experienced. There has been a general migration of officers from Sydney to the wonderful lifestyle of rural areas.

Before joining the NSW Ambulance Service *Geoff* did his **Nursing at Concorde Hospital** in Sydney. However, always as a little kid he wanted to be an "Ambo". Why? His mother says that one day they came upon an accident in the car: his father got out, & all *Geoff* wanted to do was to go & have a look at the injured men. Of course they wanted to shield *Geoff* away from that & keep him in the car; but ever since he had an interest in medical things – so his mother tells him. *Geoff* was eager to finish his nursing to join the **NSW Ambulance Service**.

When *Geoff* joined it was a matter of ringing up & saying "I would like to be an ambulance officer". They (this is Sydney) said "Oh, great! – can you come in tomorrow"? "Fine", so I went to Sydney Headquarters (in 1979) wearing a suit & tie & sat down. There were three of us. One gentleman there had hair down to "here", & the superintendent came out, looked at us & said, "you & you into my office - & you might as well leave now & get a haircut"! Today if one was to say that you would be up before a discrimination court.

The interview was the strangest I have had; it was a matter of "this is how much you will get paid – you have been a nurse – when can you start"? I have never regretted my experience with the Ambulance Service as I have learned a lot & enjoyed it thoroughly.

*Geoff* did his time at **Liverpool Ambulance Station**. He trained in rescue techniques, & worked on an

ambulance rescue truck for a number of years. From there he specialised into communications & the control room which was at Liverpool – which is now closed & gone to Sydney itself. From there he decided that rather than go into Sydney Headquarters & work the control room he'd come to the country.

When *Geoff* applied for **Albury** he didn't even know where it was – it just sounded good. A phone call told him "you've got the job", so he came to have a look. It is a wonderful place to bring a family up. So

*Geoff* moved down to Albury &

then about eleven years ago he specialised in "advanced life support level 4".

② The Ambulance Service in NSW has continued to improve both performance & organisational systems as a key clinical push forward in today's modern society.

For 2002-2003 the A/S of NSW assisted & assists someone every 40 seconds. In 2003 some 895,000 "000" emergency calls were responded to; 595,000 patients were transported; 3,000 people were employed at 266 locations across the state. The A/S of NSW operates over 800 ambulance vehicles & 300 support vehicles, & travels on average 20 million km per year. The A/S of NSW is the largest A/S in the world for organisation & distance travelled & everything. Some years ago they were listed by the World Health Organisation as one of the top pre-hospital care providers in the world, & they aim to keep up with modern technology in that area.

Three years ago the "Southern Division (the Murray)" merged with the "Riverina (Wagga)" to become the "Southern Division". So there is the "Sydney Division", "Western Division (Dubbo, Broken Hill)", the "Northern Division (Newcastle, Hunter etc)", & the "Southern Division (from Wollongong to the Vic border & across to Albury & Balranald & the Sth Australian border)".

In the **Southern**

**Division** there is about 58 stations & a population up to about 800,000 people. They have about 84,000 emergency responses, & transport about 50,000 people in emergency situations. Most of the staff have been trained in the use of 4WD specialist vehicles & have 4WD ambulances within the district (Albury has one, which also covers other areas such as for bush fires down the coast. New stations have opened at Sussex Inlet, Queanbeyan, Kangaroo Valley, & recently the Hay Ambulance Station was opened. A new station is almost finished & refurbished at Holbrook as part of the Holbrook multi purpose complex centre.

Photo: Albury Ambulance Service



Stretcher in Early Ambulance

**K G HIGGINSON & CO**  
**ACCOUNTANTS**  
531 Wilson St ALBURY  
Ph 02 6021 7155

Albury & District Historical Society Inc., PO Box 822, ALBURY, NSW, 2640.  
BULLETIN 436. June 2004. Page 2

>>>

They have responded to bush fires throughout the Division; even the "Waterfall train disaster" & the "Berry mountaineer crash". For the Sydney Olympics all officers were taken to Goulburn & trained in anti-terrorist activities & biological & radiological situations - & that training is on going.

③ **HISTORY:** 1881 the Board of Health established a service to transport infectious disease cases to isolation wards. In 1887 the Army Medical Corps gave a public demonstration of first aid, resulting in a proposal to form the first Sydney based Civilian Ambulance Brigade. Receiving much support, they decided to attend major sporting events only; their motto, "for the love of life". Despite this the Army still dealt with most casualties. At a Military Review a person fractured their leg & required treatment & transport; & then the need for a full time Civilian Ambulance Service became apparent. So in 1894 the **Redfern Bicycle Club** had the first bicycle ambulance; a report stated "it could reach the scene with dazzling speed". The bicycle was the first of the mechanical ambulances.

A meeting was held & the **Civil Ambulance & Transport Brigade** was formed. In 1895 the Civil Ambulance & Transport Brigade commenced operations with officers occupying part of an old police station in George St Sydney: & equipment was one hand pushed stretcher (litter) & a bicycle. This was the direct forerunner of the Ambulance Service of NSW.

Regarding **Hand Litters**, in the Corowa Federation Parade there was an Ambulance Litter. Some of it was restored & officers were in original uniforms. It was probably very uncomfortable, especially where it was used on cobblestone roads in Sydney.

In 1902 the ambulance serviced the population only within 20 miles (32km) of Sydney, & travelled over 9,000 miles (14,500 km) that year, treating more than 2,000 patients. Then many other ambulance stations opened around greater Sydney & around rural NSW. In 1904 the brigade was renamed to the "**Civil Ambulance & Transport Corps**". In 1914 WWI was declared & the corps was equipped & it's vehicles were given to the State Government: they went off to the war. In 1921 Ambulance was again renamed to "**The NSW Ambulance Transport Service**".

Two way **radios** in ambulances didn't exist, however in 1937 they were introduced allowing more rapid

response times. (Geoff showed one of the old radios, of which no one else has one). They had a vehicle with a big thick metal mast to the roof on the front of the car. It had a limited range of a few blocks to Sydney Headquarters in Quay St (whereas today they talk on the mobile to Wollongong (Warilla). The former control room at Albury & radio room at Wagga were closed by the government & merged into a new Control Room at Wollongong. Wollongong controls the whole of the division, & they talk to Balranald. They now have satellite Global Positioning Satellite (good in bushfires) to give position to a helicopter within four metres.

In Sydney, down the coast from Wollongong, & from about Tarcutta back to Goulburn is all controlled by Mobile Data Terminals. So ambulances have a voice radio, but most of the information is downloaded by satellite to a small computer in the ambulance. The screen shows the car number, cross street, & additional information which could say such as "CPR is being administered" or "someone will meet you". One wonders about the technology in ten years time!

In 1941 the first **Ambulance Cliff Rescue Unit**

was brought into service. Rescue in this area (vehicle rescue etc.) is done by the VRA, working with the Ambulance Service & the Fire Brigade in Sydney. Rescue is done by the Ambulance Rescue, Police Rescue, & Fire Brigade Rescue.

At Albury, in 1934 the current station was opened (there were previous stations). (Pay) records (from

1932) are still deemed confidential & cannot be released. The front of the station is protected by National Trust Heritage Listing. Several years ago it was painted in its original heritage colours. The amenities have not changed much - the original kitchen for eight officers now caters for 27. The front used to have a plant room; they used to drive the ambulances out the front of the station. It is all closed in now & the plant room is at the rear. They now have nine vehicles; four Mercedes, two smaller VW's for routine transport, a 4WD & several smaller vehicles used for relief.

They have a **standard of care**: level 3 officers (qualified); then two levels of "paramedic" (level 4 & 5 in NSW). So the likelihood of getting the intensive care unit is fairly good. Officers can deliver pre-hospital care; intensive care standard, even at the side of the road. At Albury about 85% of the staff are "gold badge" level 4 trained; four officers are



Photo: Albury Ambulance Service

Early Chevrolet Ambulance

This space  
is available  
for  
**ADVERTISING**

Albury & District Historical Society Inc., PO Box 822, ALBURY, NSW, 2640.  
BULLETIN 436, June 2004. Page 3

Support our  
advertisers!



<<<<  
"silver badge" level 5; & three officers are currently training in Wollongong for even further advanced care.. The Government aims to have a Paramedic in every ambulance.

- **Geoff Kent** 12/5/04

## ANSWER TO QUESTION OF THE MONTH (May)

### When did the Albury Ambulance Station open?

**Helen Livsey** - Prior to getting a motor ambulance, & the Station in 1934, Albury had the St John Ambulance Association. In 1908 *Ald Alf Waugh* was President, *Mr Phibbs* was Vice President, & the Secretary was *Frank Shepard* (who was a brewer who lived at Brasseurville - the brewer's house - now decaying & vandalised near the Union Bridge).

In May 1908 *Frank Shepard* suggested a horse ambulance was "an absolute necessity" for a town & district the size of Albury". He considered "some provision should be made for the district where accidents were of frequent occurrence" & referred to an incident at Morven from where a child was brought by mail train to Albury after suffering burns.

The **hand ambulance** was useful in the town for conveying people from places within easy reach of the hospital - although it needed two carriers, & two reserves for when they got tired. One in front, one behind, & one used to run along each side. It had no wheels apparently, it was all foot power. The hand ambulance was known as "Shepard's Litter" & *Frank Shepard* was a major contributor to medical care in Albury for many years.

**Gerry Curtis** - The present A/S is the 3<sup>rd</sup>; 1. There was once one down in David St on the east side towards Hume St. 2. One was in Young St slightly north of Dean St. 3. The present A/S was the last building designed by *Louis Harrison* - architect. *Alf Waugh* laid the foundation stone in August 1934 & referred to *Harrison's* illness & coming death. *Harrison* died at the end of October, about a week after the "Uiver" landed here, & *Mrs Waugh* opened the A/S in December: it was built in five months. *Harrison* came to Albury in 1916 & died in 1934 & is buried in the Albury Cemetery.

**Narda Reid** - Are all A/S's in this area manned 24hrs/day? **Geoff Kent** - Only Albury (a headquarters & training station) & Wagga; otherwise they open from

8am to 4pm or 9am to 5pm, then "on call".

Albury currently has 3 trainee officers from Sydney. Albury has 3 ambulances (2 officers per car) 8am - 8pm; then 4 officers at home with an ambulance "on call" to provide backup; & then there is a night shift from 8pm - 8am.

**Workload:** Starting from 18 years ago, they would do 2 or 3 jobs/ week on nightshift - now it is 43 jobs from 12am to 12am. Now more metropolitan, with drug & other problems.

**Jan Hunter** - Who funds the Ambulance? **G.K.** - There was fundraising when I first joined: we are run by the NSW Govt. We have defibrillators needing

replacement with the better "zoll defibrillators" worth about \$8,500 each (2 from Govt. for 8 vehicles). Officers have given talks & demonstrations; the Commercial Club donated one, & also the Lions Club, & similar. Now we have 6 for Albury within the last 6 months.

**Ron Braddy** - in "Apex days" when *Harley Davidson* was in charge, you had to raise your own money (& wages); Apex had an Xmas spinning wheel.

**Geoff Kent** - photos show that the

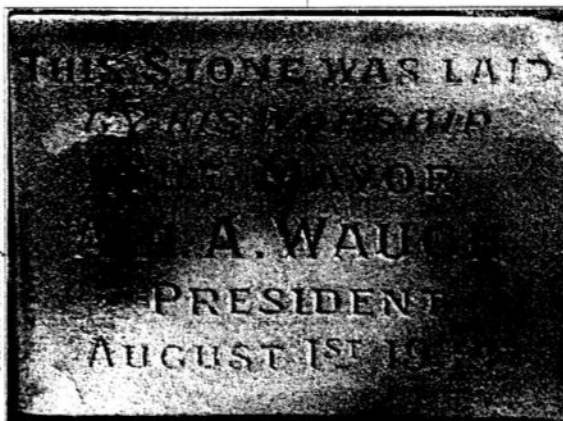
old ambulance was a converted sedan, but now we have seat belts for stretchers & everyone. The NSW Air Ambulance was started with the backing of the Royal Flying Doctor Service; now the RF Doctor Service runs the Air Ambulance.

**Max Barry** - 35-40 years ago a local committee was in control, from the Hume Weir to Balranald or South Australian border; (& other districts had a similar situation). The Committee was of local representatives, meeting once a month at the A/S. *Alf Barker* was the superintendent. Each committee was responsible to raise funds to run the service & replace vehicles.

**VEHICLES** were converted Holden utilities & later, Ford F100's. The Fords were more comfortable, but the Holdens were less expensive. The staff had to raise funds with a spinning wheel at the Albury show, at Mate's corner; & they held a Melbourne Cup sweep which was mostly ignored by the Police. People would subscribe annually for free ambulance services.

**Geoff Kent** - we no longer have a subscription scheme. That was taken off us & handed over to the Health Funds. Otherwise, if you are on a pension you get free ambulance service.

Photo: Albury Ambulance Service



Foundation Stone - Albury Ambulance Station



**PLANNING TO SPEAK AT A MEETING?** Please remember to write it down & give it to a Committee Member for the Bulletin Editor.

Photographs (originals or small photocopies) are welcome. Also, quote your sources.

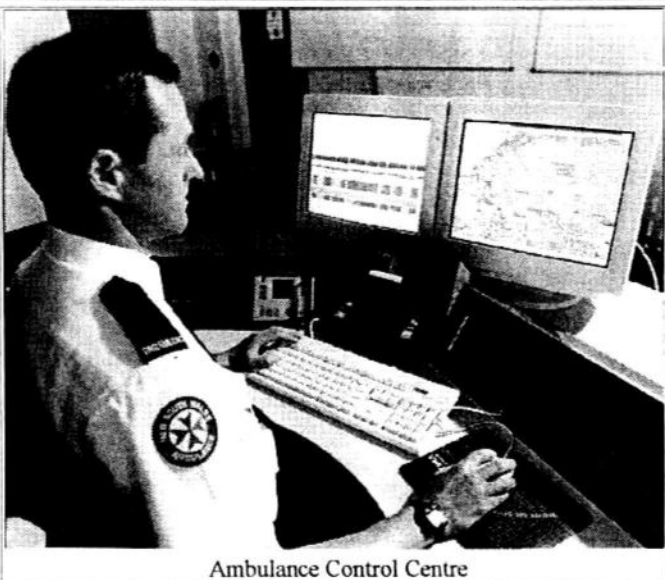


Photo: Albury Ambulance Service

Ambulance Control Centre

<<< At Albury the last F100's & F250's were got rid of about two months ago. They were *G.K.*'s era of vehicle.

**SIRENS:** The officers at the A/S can't comprehend that when *GK* First joined the service & had the F100, you had a siren on which you had to "push & pull me". You had to drive it, like with column shift, & at the same time pull the siren on & push it off.

At Liverpool the greatest thing was when we had the electronic *Hee-Haw's*. We had one at Albury; we put it on until we went to an accident & it stuck. We tried pulling out all of the wires. Then we had an old rescue truck that had a huge silver siren taken off an airport fire truck & we used to literally pull that on & it used to wind up. It would go for almost 5 km & you would turn it off 2km before the scene & it would wind down. It would move everything out of the way. It wouldn't be allowed today because of the high decibels. Now we have electronic computerised sirens.

It is sad that we can't find many records at Albury, but it is important to keep an historical record. It is vital for the future to know where we came from.

- Geoff Kent

## CHAIRMAN'S ANNUAL REPORT

I am pleased to present this Annual Report for the year 2003 - 2004. In doing so I wish to convey my appreciation to your Committee for dedication to their responsibilities; their assistance & guidance in making my position so much easier. After deep & lengthy consideration I must make members aware that I will not be seeking office to the committee for the ensuing year. Therefore I have declined nominations.

## Activities For The Year 2003 - 2004:

- 1 Finalised the agreement "Donation of Collection" between the Society & Albury City Council.
- 2 Correspondence to Albury City Council & Library supporting **Funding Grant Applications** for Cultural Precinct.
- 3 Letter to A/C Council outlining the Society's concern on the redevelopment of **Heritage Listed Buildings** without visual (photographs) or written studies.
- 4 Purchasing of audio/visual recording equipment for recording of **oral history** from longtime residents.
- 5 *Charles Brackenridge* was requested to attend a "find" at Lake Mungo, of ancient bones. He was able to identify & have them carbon dated.
- 6 Attended the 20<sup>th</sup> anniversary celebrations of Albury City Council take-over of the **Museum** from the A&DHS.
- 7 Committee members attended an **Oral History Workshop** at the Albury Regional Museum.
- 8 Conferred with *Michael O'Mullane* (CSU), RE: **marketing plan** for A&DHS.
- 9 The **Christmas Party** was again a success. Short talks were given by diners during the evening.
- 10 "Bring & Tell" in December saw the presentation of approximately fourteen items of interest.
- 11 Committee members, *Gerry Curtis & Ray Gear*, assisted the Albury Library in **Heritage Week** with the presentation, "Buildings of the Gordons", Architects 1868-1913.
- 12 Both Albury & Wodonga Historical Societies had input to the book "Buildings of the Gordons", produced by *Jean Whittle, Uta Wiltshire, Ray Gear & Gerry Curtis*. The book was launched during Heritage Week. Both societies will benefit.

Additional thanks must go to; *Gerry Curtis & Helen Livsey* who continually perform beyond the call; our editor *Michael Katalinic* for his dedication to the task; & of course not forgetting *June Shanahan* (will the work load be too great for June!).

Many thanks to our Members & Guest Speakers.  
*Peter Harper* - "History of Dentistry in Albury & Wodonga" (Bulletin 426).  
*Helen Pithie & Carina Clement* - "Museum / Albury Cultural Precinct" (Bulletin 429).  
*Harry Benyon* - "Early Years of Peard's Nursery" (Bulletin 430).  
*Major Graham Docksey* - "The Expanded Military Museum & It's Early History" (Bulletin 421).  
*Roslyn Webb* - "History of 'Hawksview', Hume Weir"

<<<

(Bulletin 433).

Jack Friedlieb - "Pharmacy Days in Albury, 1920 - 1950" (Bulletin 434).

Chris Stewart - "Tourism & History for Small Communities" (Bulletin 435).

Geoff Kent - "Development of Albury Ambulance Station & Services" (Bulletin 436).

Thank you.

- John Craig - Chairman

## GENERAL NOTICES

**1 Invitation To Nominate Your Favourite Heritage Icon** -from the NSW Heritage Office. What icons should be on the State Heritage Register? The Heritage Office will list the most popular heritage icons for the Heritage Council, who will review the list & make recommendations to the minister. Icon must be **Significant** to many people. Nomination Forms are available. Ph 02 9873 8599.

## 2 Note for future Bulletin Editors:

1. the National Archives in Canberra have adopted the OpenOffice.org document format ".XML" to store important & National Heritage documents, because of its promise of non-obsolescence. Other proprietary software deliberately change their format every few years to force people to upgrade their software.<sup>2</sup> **Someone who can read Old German will be able to read & understand the Gutenberg Bible of the 16<sup>th</sup> Century - but there is almost no way to read & understand a document created with a computer from a mere 25 years ago.<sup>3</sup>**

■ Zymaris, Con "The Essential Guide to OpenOffice.org" 2004

1. Zymaris p26

2. Zymaris p25

3. Zymaris p25

## JOURNEYING THROUGH THE JOURNALS

compiled by John Craig

A compilation to help members find items of interest. These journals can be viewed at the Albury City Library - History Resources Room:

DESCENT: Journal of Society of Australian Genealogists Mar 2004

1. Children of Ship "Sir Edward Parry" Who Arrived in Australia May 1848.

2. Joseph Michael Forde (1840-1929). Author of Articles Under Different Pen Names.

HAWKESBURY CRIER: F.H.G. Newsletter March 2004

1. Battle of Vinegar Hill, 1804 - 2004.

2. Pitfalls of Cemetery Transcriptions.

LIBRARY OF AUSTRALIAN HISTORY PUBLISHERS / BOOKSELLERS:

1. Order Form for Various Historical / Genealogical Publications.

MANSFIELD HISTORICAL SOCIETY Newsletter Apr 2004

1. Mansfield Courier Jottings - August 1898.

2. Arrival of First Train (1891) To & Departure of Last (1977).

MURRUMBIDGEE ANCESTOR - Journal Wagga Wagga F H S April 2004

1. Maritime Records For Family History Research.

2. Our Early Days, Cont'. From January Journal, Told by George Seymour, November 1925.

MUSTER: Central Coast (Gosford) Family History Society Journal, April 2004

1. Serendipity - Identification From a Pile of Rubbish.

2. Copyright Issues.

NATIONAL ARCHIVES Research Guides Available on Australian Prime Ministers - Allies, Enemies & Trading Partners - Australian Focus (National Archives Photographs).

STOCKMAN'S HALL OF FAME April 2004

1. Poem: "The Walls of Jericho".

2. Incredible Story: "The Lost Watch".

## NEXT COMMITTEE MEETING

5.15pm Tuesday June 22, 2004, at Albury City Library.



alburyprinting

10814 GORELLA ST  
NORTH ALBURY

PH: (02) 6025 2138

Printed by..



alburyprinting

(Bulletin Editor: Michael J. Katalinic, Phone 02 6025 9347)

Albury & District Historical Society Inc., PO Box 822, ALBURY, NSW, 2640.

BULLETIN 436, June 2004. Page 6