



Hamilton Hume

*Albury Centenary Celebrations*  
— Novr 1824-1924. —  
*Souvenir Programme*



Capt W.H. Hovell.



*A View of the Murray River above the dam.*



# HUME & HOVELL CENTENARY.

ON this historic occasion it is well to review some of the leading incidents of the past century. First and most important is the discovery of the river, on November 16th, 1824. In the journal of the explorers the country is described as "lightly-timbered forest, chiefly box." Grass was plentiful, rushes lined the lagoons and river banks, creepers festooned the trees, while the musical bellbird added charm to the prospect.

Eleven years later Wise arrived with the first stock to reach the river, and settled at Mungaheringa.

But a short year after, Paul Huon followed and took up the Wodonga run. He was accompanied by his brother-in-law, Robert Brown, who built himself a hut close to the "Hume Tree," and hence was the first resident of that which we now know as "Albury."

Overlanding to Port Philip was rapidly established, and in 1838 the demand for building allotments became so keen that Surveyor Townsend was directed by the Governor to mark out a township. This he did, and in the following April his plan was approved and the name of "Albury" officially attached.

The growth of the town in its early days was slow but steady, and in 1847 a Court of Petty Sessions was established.

By 1851 we read of Schools, religious services with resident ministers, and in February, 1853, the appointment of the first Police Magistrate. Steamers were running fairly regularly on the river.

1856 was marked by the opening of the first Bank, and the publication of the first Newspaper, in the district. The following year saw the birth of the Agricultural Society and the Mechanics' Institute, while the movement for a Hospital was launched.

In 1859 the Municipality was gazetted, and J. T. Fallon elected as first Mayor. 1860 is memorable for the acceptance of tenders for the first bridge over the "Murray."

From this time progress was more rapid, and it only remains to note the most important events. In November, 1873, the railway from Melbourne was opened to Wodonga, but the line from Sydney did not reach Albury till 1881, and the junction of the two was not completed until June, 1883. The occasion was marked by the presence, at a banquet, of the Governors of the two Colonies, many Members of Parliament, and in all over 1000 of the leading men of the time. Among the visitors was Boyd, then the only survivor of the Hume and Hovell expedition, and probably the first white man to swim across the Murray.

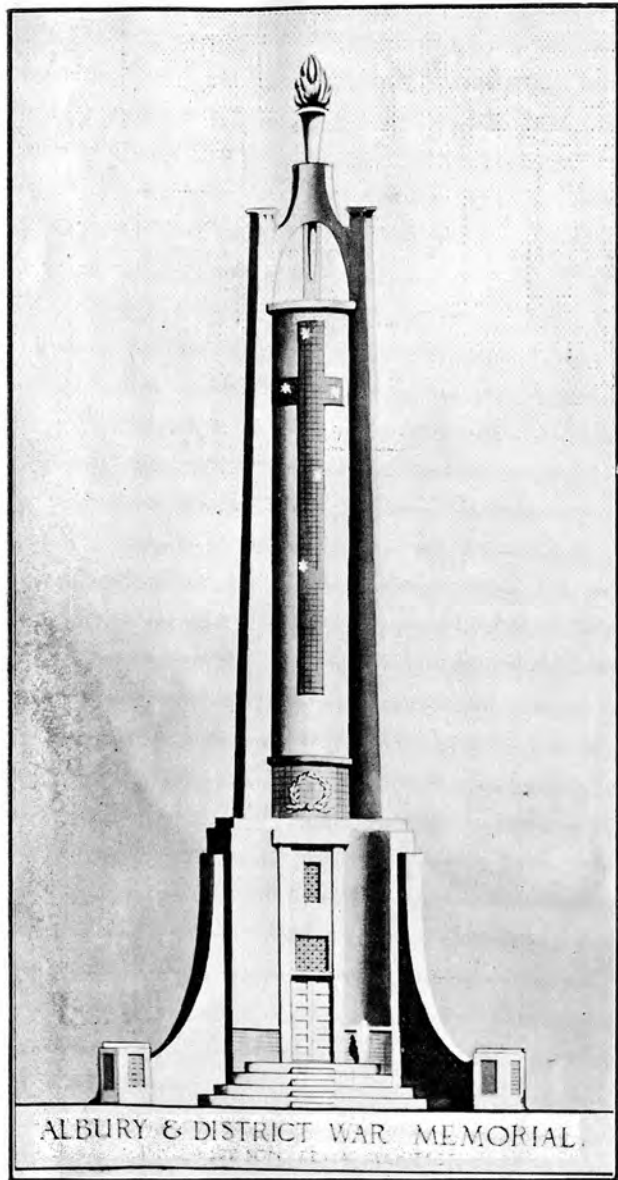
From this time many events will recur to the memory of the older residents, and the steady progress of town and district, especially after Federation, with the consequent removal of the "border duties," will be obvious to all.

It only remains to contrast the conditions in the district with those of 1824. Where then but a few scattered Aborigines roamed, we now see rapidly increasing townships and a never ending succession of prosperous farms, with churches, schools, and the many requirements of a happy community. I have said nothing of those who by their lives of self-denial and hard work laid such a good foundation. They require no monuments to remind us of them, save that we see when we look around. May our successors a century hence have as much reason to remember and respect those of the present time when it becomes their privilege to celebrate a similar Centenary.

ARTHUR ANDREWS.

Wholly set up and printed by  
THE "DAILY NEWS" PRINTING COMPANY LTD.,  
ALBURY, N.S.W.

Photos, by C. G. Salmon, Albury.



SUNDAY, NOV. 16.



Church Services.

Unveiling of Soldiers' Memorials at  
Albury and Wodonga.

Sacred Concert

Afternoon, 4 o'clock;

Evening, 8.30 o'clock.





MONDAY, NOV. 17.



Grand Brass Band Contest commences.

Adjudicator: Lieut. J. Ord Hume,  
London. (Prize Money, £500.)

Instrumental Solos.

Entertainment of Official Party of  
Victorian Celebrators.



TUESDAY, NOV. 18.



Civic Reception to Visitors.

Grand Parade to Hovell Tree Reserve.

Addresses.

Representation of Crossing the Murray  
in 1824, by Hume and Hovell  
Expedition.

Band Contest Sessions continued.

Competition Solos.





WEDNESDAY, NOV. 19.



Grand Demonstration by 1500  
Children.

4000 Children Entertained by the  
Committee.

Physical Drill.

Maypole Dancing.

Spectacular Tableaux.

Band Contest Quickstep.

---

WEDNESDAY EVENING.

---

Public Banquet.

Massed Bands Concert, conducted by  
J. Ord Hume

Brilliant Pyrotechnic Display.





THE ACTUAL CROSSING PLACE HUME RESERVOIR.

THURSDAY, NOV. 20.

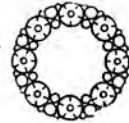
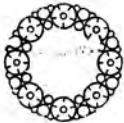


Morning.—Official Visit to Actual  
Crossing Place at Hume Reservoir

First Day Centenary Race Meeting,  
under auspices of Albury and L.V.  
Racing Clubs.

Albury Centenary Gold Cup Day.

Evening.—Grand Centenary Ball and  
Supper.





ALBURY SHOW GROUNDS, where Sports will be held.

Photo. by J. W. Hunter

FRIDAY, NOVEMBER 21.



Athletic Sports Carnival. (£300 Prize Money).



SATURDAY, NOV. 22.



Second Day Races.

John Campbell Handicap Day.

Evening.—Grand Final Demonstration.

Torchlight Procession.

Confetti Battle.

Decorated Vehicle.

Fireworks.

In addition to the above, the following will also be held during the celebrations:—

Pioneers' Conversazione.

Church Societies, Friendly Societies, and others, will entertain visitors at social functions.

Swimming Matches.

Bowling.

Tennis.

Rifle Shooting, etc.



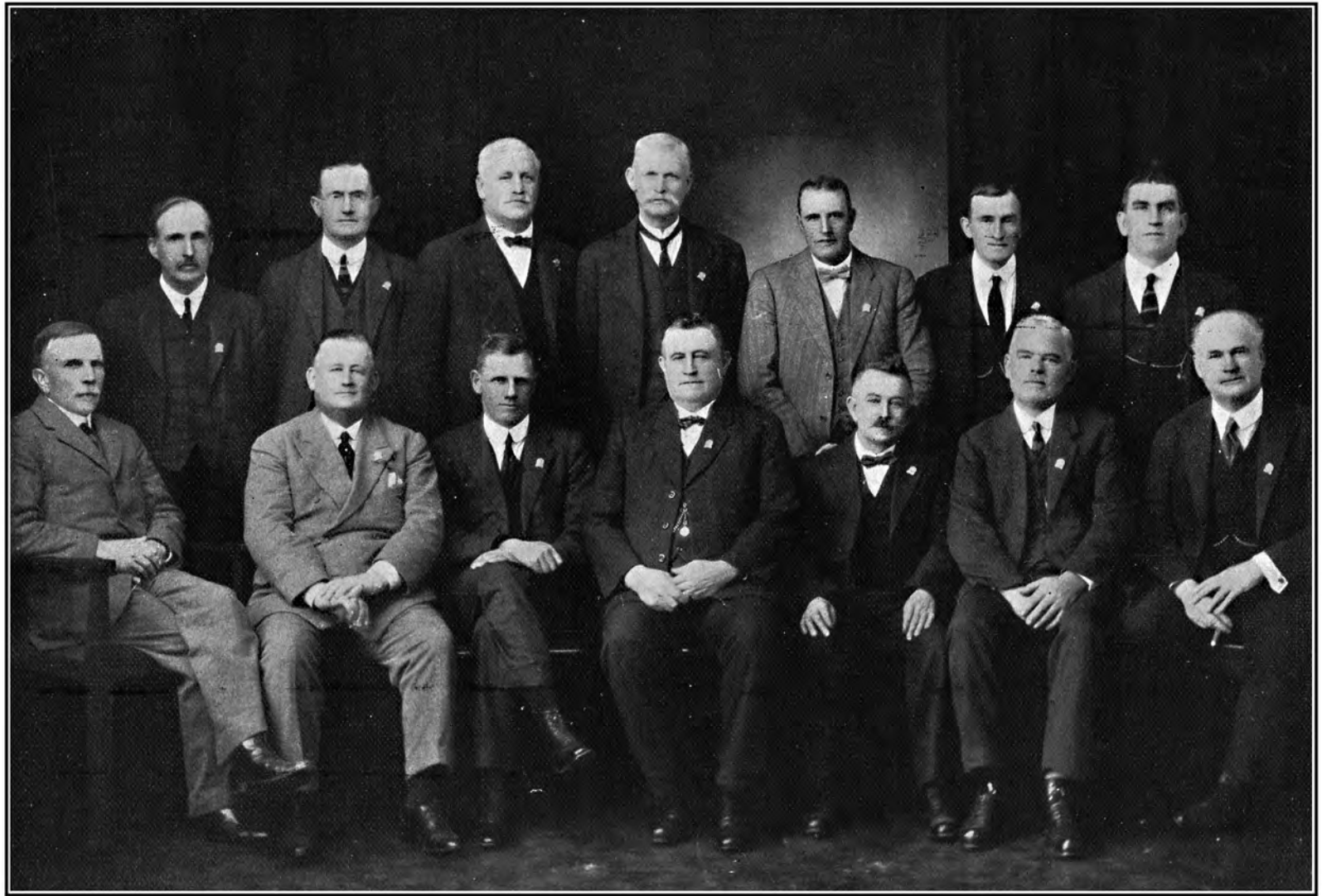
THE SADDLING PADDOCK, ALBURY RACECOURSE

Photo by J. W. Hunter

DELIGHTFUL MOTOR TOURS  
ARRANGED.

REST LOUNGE FOR VISITORS,  
DEAN STREET.

A. WAUGH,  
Hon. Secretary and Organiser,  
Albury.



HUME AND HOVELL CENTENARY CELEBRATION COMMITTEE, ALBURY NOV., 1924.



THE ACTUAL CROSSING AS IT APPEARS TO-DAY, showing Pumping Station—Hume Reservoir Township.  
Locality Sketch on back.



