

February 2023

No 641

Wiradjuri Country, PO Box 822 ALBURY 2640

<https://alburyhistory.org.au/>

For Your Reference A&DHS account details are:

BSB 640 000 Acc No 111097776

Registered by Australia Post PP 225170/0019 ISSN 2207-1237



Next Meeting

Wednesday, February 08, 2023

7.30 pm, Commercial Club

Topic: DNA & Family History

Speaker: Robyn Hawking

ALBURY LIBRARYMUSEUM
The Bowerbird & the Bride
(Marion Boyce collection)
February 25–May 21

Page 2 Mate's Window

Page 3 Comparing Christmas

Page 5 Businesses of the Past

Page 6 Show & Tell

Page 7 Heritage Planning

Page 8 Pioneer Cemetery visit

Page 10 Trove Funding

Santa at his keyboard visiting our December 2022 meeting and right, the same Santa as part of a Christmas display in Mate's Store window, 1968

PRESIDENT'S NOTES FOR FEBRUARY

What a strong finish we had at our last meeting of 2022.

There were seven contributions from members reminiscing about Christmas and other themes. A large number stayed on and were deep in conversation until well past 10pm. This year we installed plaques acknowledging fine restoration works at heritage buildings, Adamshurst, Soden's Hotel and the Railway Commercial Hotel, which was re-purposed to stylish apartments. In this way we celebrated the 60th anniversary of the founding of our Society in 1960. We continue to encourage developers and builders to see the positive side of conservation.

Our active role in the community continued with participation in the Albury City Community Heritage Working Group, Heritage Street walks, the Uiver Restoration Project open day, a cemetery walk for the Bonegilla Migrant Experience, a workshop on the use of Trove and talks to business and community groups. We became the first regional city in NSW to install a Blue Plaque when we honoured Betto Abicare and the role of the Lebanese community in Albury. It was gratifying to have our role in the community praised by the Member for Albury, Justin Clancy and our Mayor Kylie King when they spoke at public events.

At our monthly meetings we were treated to some very interesting presentations from local presenters, one from Florida USA and one from Melbourne. They are always a highlight of our gatherings.

At the request of the Museum Co-ordinator we will be conducting more heritage street walks during 2023 so if you see us out on the street with a group, give us a wave! I am looking forward to another great year at A&DHS and I hope to see you at our first meeting on February 8.

In a serendipity moment, a phone call from Gary Palframan to the Society's president, Geoff Romero, opened up an opportunity to access some family photos of the Mate's Limited Christmas windows for the years 1966 to 1968. Gary is the grandson of Stan Heppner, who created the moving parts to bring alive the Mate's Limited windows. Gary also offered the famous Santa playing the organ complete with motor to the Society and it was displayed at the meeting in December.

The members of the Society were treated with a trip down memory lane. The photos of the Christmas windows for the years 1966 to 1968 were displayed against the backdrop of the late 1960s – an era of change. Bob Dylan's song released in March 1965 – "the times they are a changin'" became the anthem of the protest movements breaking out around the world, but it was a world apart from the Mate's Limited Christmas windows.

T H Mate and Co Ltd (later Mate's Limited) had a long tradition of impressive Christmas merchandising. From the *Albury Banner*, December 16, 1968 there is an article about the "Christmas department" with a "magnificent assortment" of goods after "Mr Thornton spent a whole three weeks in Sydney and Melbourne ransacking the two cities for the newest and freshest of goods." The article refers to "a special inducement for bashful lovers, "conversation" confections in a new form are temptingly displayed."

It was no surprise that once Mate's had Stan Heppner working for them, they were able to take their Christmas merchandising to a whole new level. Mr Heppner was a creative genius able to build the mechanical workings so that the Mate's Limited windows became what are called animated windows designed to enchant the Albury residents and to attract visitors to the city during the lead up to Christmas.

We know that Mate's Limited first animated window was in 1956 with Santa playing the organ as its main feature. Albury is believed to have been the only place outside the capital cities to have animated window displays for Christmas. Windows with a theme and moving parts to tell a story. Myer also started its animated Christmas window tradition in Melbourne in 1956.

The family photos finish in 1968 when Stan Heppner was 65 years old. We know that Mate's Limited was sold to Waltons in 1976 but at this stage we don't know if the windows continued after 1968. The coloured photos are from the Heppner family album.

Mate's Limited had several windows fronting onto Dean Street and Kiewa Street but two of the windows were set aside in the lead up to Christmas for the animated Christmas window displays. One window had Santa playing his organ, with his fingers moving across the keys and Christmas Carols playing in the background. He appeared each year in the main front window from 1956 and in the years 1966 to 1968 he sat amongst the cosmetic gift ideas being the season's favoured gifts for the year.

The other permanent Christmas window display was the Toymaker's window but each year the toy display around the Toymaker scenes changed to show off the latest and most desirable toys for the Christmas season. The elves are at their



Santa in the cosmetic gift ideas window, 1968



Santa's elves at work



The Toymaker supervises his elves



Cinderella arrives at the Ball

workbench creating and building the toys ready for Santa to bring to the Albury children, and in another scene the elves are in the workshop building more toys. The elves had moving parts and could be seen hammering and sawing as they worked hard to be ready in time to bring Christmas cheer to the children of Albury.



Mr Heppner and Mr Kershler (Mate's advertising manager) checking the mechanical parts – a photo from the *Border Morning Mail* dated November 15, 1966. The moving parts were made from old pieces of Meccano, and a discarded pianola mechanism.

The Toymaker sat in his chair peacefully supervising the elves, and possibly having a little nap. Mr Heppner made a small motor to make the Toymaker's chest rise and fall to make him appear to be breathing.

Other windows in 1966 included a Nativity Scene, a Noah's Ark scene and inside on the ground floor was a giant revolving Christmas Tree.

The special Christmas windows for 1967 and 1968 had a storybook theme – Cinderella in 1967, Alice in Wonderland in 1968. There were over a hundred complicated moving parts to bring Alice in Wonderland alive to enchant those standing on the outside looking in at the incredible window display. According to the *Border Morning Mail* "the real wonder of this wonderland lies not in the scenes themselves but underneath where a maze of chains, belts, pulleys and gears ... brings the story of Alice alive" (BMM November 21, 1968).

Other displays were about merchandising and Mate's Limited at the time had four window dressers employed to

artistically arrange for the window displays throughout the year. The windows presented the merchandise with a distinctive Christmas theme offering suggestions for those struggling to think of the ideal gift.



Merchandise also featured with Christmas themes – Ladies' fashion, Men's accessories, Homewares

The family of Stan Heppner have generously offered the Santa display to A&DHS / Albury LibraryMuseum. The ALM is interested in accepting the donation of Santa and his organ, but their acquisition protocol has to be implemented to assess if they can acquire, restore, store, and display this wonderful piece of Albury's history.

COMPARING CHRISTMAS IN 1955 AND 1965

Richard Lee

Christmas 1955

In 1955 the *Border Morning Mail* used a lot of British newspaper photos in their editions about Christmas, but not many local photos of Christmas – a few of people enjoying Noreuil Park and Albury swimming pool.

Santa arrived at Mate's department store at 4pm on November 30 in his special car. He remained at Mates until Christmas. Albury Rotary Club appealed for unwanted toys to be distributed to underprivileged Albury children.

As expected, every school was having speech nights, annual concerts and the all-important examination results were printed in the BMM.

South Albury Tennis Club held their Christmas party at South Albury Hall. The paper had a lovely photo of a young lady providing cigarettes at the event entitled the 'cigarette girl' (not something we condone today).



Santa visits Albury Base Hospital

The following is a list of some retailers advertising in the BMM, most have now left the retail scene: The Big Store, Gissing & Dennison, Farmer's Delicatessen, C&C Store, Rudin's, Stiff & Gannon's, Edment's, Smithston's furniture, H G Palmer, Mac's Super Value, Moran & Cato, Stan Steen Cycles, Palings. Butchers included Ron Alexander and Lloyd's. There were the car yards, Baker Motors, Preston Motors & Blacklock's.

The page one headlines in late December included "Biggest spend ever in Albury," "Coles doubles staff," and "Bumper to bumper traffic in Dean St." It was noted that "movie cameras are very popular this year so get yours at Foto Supplies."

Christmas 1965

Mate's Department Store had just expanded and renovated at a cost of £250,000, increasing floor space by 35,000 square feet (about 3200 square metres). They had a modern layout including air curtains at their entrances. All departments had expanded and the BMM had a 28-page supplement.



Albury retail stores competed with each other for original arrivals of Santa. Here he arrives at Mate's Store on a speedboat in 1959. For several years Maple's store had Santa arriving on a mock helicopter.

Hanrahan's Dry Cleaners, David Street were in their new depot with a drive through.

Albury's Children's Library had special displays and stories read every morning at 10.45. Albury Lions Club held their Christmas Party at the John Marshall Hanger, members required to display their pantomime skills. Red Cross was giving out Christmas presents to about 70 patients at the Albury Base Hospital. Murray Valley Centre for the Intellectually Handicapped visited the Army where they enjoyed a Christmas party and concert.

400 Christmas trees were delivered to the Lion's Club for sale near Mac's Store in Mate Street and a site opposite Blacklock's Motors in Kiewa Street.



In 1965 Vines Florist won Albury Chamber of Commerce best retail store decorations competition and Albury Botanic Gardens won NSW's Best Public Gardens award for a third successive year.

Miss Parry's School of Dance performed "The Night before Christmas" at the new Albury Civic Theatre. The Coronet Playhouse Christmas production was "The Wizard of Oz."

Albury Council planned five nights of carnival:

- Monday at the Civic Theatre the Chamber of Commerce sponsored a band recital by Albury City Band with guest vocalists.
- Tuesday featured Caledonian Dancing, 1000 people attended.
- Wednesday had two events, for young children the Savickis Children's Theatre performed "Cinderella" and "Rumpelstiltskin" in the Civic Theatre. For teenagers, Dean Street was closed between Kiewa & Olive Streets for 'Big Beat Music,' featuring the 'Toltecs' and 'The Shades.'
- Thursday had a program of negro spiritual music and folk singing with compere Mr Ray Kidd from AMV4.
- Friday there were Christmas Carols with organist Graham Stocks, compered by Mr Tom Roberts.

The former Turk's Head Hotel was nearing completion of a refurbishment to become the new Folk Museum for Albury & District Historical Society.

Christmas fell on a Saturday so retail stores were closed from Saturday to Tuesday evening. Petrol stations also closed on Christmas Day.

At our December meeting, my wife Martina and I were privileged to present to members a PowerPoint display with the theme relating to the past and present iconic business houses that originally operated within the CBD precinct of Albury.

Incorporated into the presentation were various advertisements that were copied from the *Border Morning Mail* microfilms at the Albury LibraryMuseum. Saleable items were shown from a variety of well-known business houses from within the city, adding to the display was original price for each individual item. At right are two examples of the many adverts that were part of the presentation, adverts for companies that have close links with sponsors and members of our Society.

The currency used back in the day was pounds, shillings and pence. It was not until the 14th of February 1966 that decimal currency was introduced onto the Australian scene.

This presentation certainly was satisfying plus a highlight of the evening not only for me but surely brought back some fond memories for our audience.

Why my interest concerning these advertisements? Well, it all commenced back in 2008 when first I became a member of the Albury LibraryMuseum. At that time, I was researching the racing

history of my brother Richard "Dick" Wilson. It was during the sixties that he became widely known around the district as a leading apprentice jockey. After completing an account of his history, I presented it to him on his 60th birthday. During my research I became infatuated with adverts that included entertainment gigs, local news and sporting events.

Today my collection totals around eight hundred copies inserted into many scrap books that I have in store at my home. I would like to share with you one of my personal highlights, regarding the Albury Royal Palais a popular entertainment venue where top line artists performed on a regular basis. Listed below are some of those Australian talent.

My collection covers many long-gone entertainers who featured locally, mainly at The Royal Palais in Kiewa Street. Performing artists and bands that you may remember – Billy Thorpe and the Aztecs, The Vibrants, The New Glentones, Ray Hoff and his Offbeats, Grantley Dee and The Hurricanes, Ronnie Burns, The Wild Cherries, The Charades, Colin Cooke and Laurie Allen Revue. A highlight was a performance by The Easybeats, possibly one of their last concerts in Australia, held on June 25, 1966 – the group departed for England the following month seeking fame and fortune.

In conclusion Martina and I would like to wish all members associated with the Albury & District Historical Society, a happy and safe New Year.



YOU CAN'T BUY MORE CAR FOR £997/10/- than MORRIS MAJOR II

It's 92.6 per cent. Australian made. 4 Wide-opening Doors. 13 Cubic Feet Boot. 14 h.p. Engine. 4 Speed Gear Box. 65 m.p.h. Cruising Speed. Full Bench Front Seat. 8000 Miles B.M.C. Backed Warranty. A Wide Choice of Colors.

CAN YOU FIND MORE CAR FOR £997/10/- ?

Sold and Serviced by **BAKER MOTORS** the Authorised Main Dealers for Albury and District. Phone 629. After Hours 1198.



HABERFIELD'S
THE ALBURY SPECIALISTS IN:

• MILK • CREAM • BUTTER • CHEESE

HERE IS PROOF THAT HABERFIELD'S MILK IS YOUR BEST BUY!

- PASTEURISED FOR YOUR SAFETY
- IN BOTTLES OR CARTONS—PLAIN or FLAVORED.
- TESTED FOR PURITY & QUALITY
- DELIVERED TO YOUR HOME BEFORE BREAKFAST

ALL MILK TESTED AND GRADED TO CONFORM WITH GOVERNMENT REGULATIONS
OUR DAIRY DELIVERIES ENLARGE THE FOLLOWING AREA:

Albury, Lavington, Wodonga, Bandiana, Bonegilla and the Hume Weir

PEOPLE WHO KNOW GOOD CHEESE
HOIST ON GETTING
HABERFIELD'S RINDLESS CHEESE

SMOOTHER SPREADING—GOES FURTHER
OUR CHOICE CREAMERY BUTTER
IS UNRIVALLED!

Call, Write or Phone to Arrange for Your Delivery.

375 David St. **HABERFIELD'S** Phone Alb. 477
DELIVERIES MADE TO COUNTRY AREAS
YOU CAN WHIP OUR CREAM. — BUT YOU CAN'T BEAT OUR MILK

An advert for one of our A&DHS sponsors (top) and for the products of long-time Society members (below).



YOUR HI-FI CLUB PRESENTS THE "WILD ONE" ★

THE ★ JOHNNY O'KEEFE SPECTACULAR ★ PLUS A GALAXY OF

RECORDING STARS

Music by the Fabulous ★ **HI-MARKS** ★
Including **SINGING STARS—**

★ Lonnie Lee	★ Laurel Lee
★ Barry Stanton	★ Johnny Chester
★ Warren Williams	★ Judy Kerzay
★ Sapphires	

Compered by ★ **FRANKIE DAVIDSON** ★

At the ROYAL PALAIS

TO-NIGHT (Thursday)

BOOKINGS NOW OPEN AT BLAKES

PRICES : 20/., 15/., 10/., 8/.

A&DHS SHOW & TELL

The star of 2022 'Show & Tell' was Mate's Santa doll sitting at his keyboard at the front of our meeting room at the Commercial Club. Santa and his keyboard had been part of Mate's window display from the late 1950s to early 1970s. See the photo on page 1 and Jenny's article on page 2.

Three diverse objects were shown by Howard Jones. A brick with the imprint 'Albury' is assumed to come from one of the many brickworks that operated in the town about 100–120 years ago. Maybe just a brick, but it is one of the few relics of an important industry that helped build Albury. Howard also showed a picture of Ernest Bunton, a brickmaker for 60 years and latterly in charge of Mate's brickworks.



A vinyl long-playing record produced by The Scots School Choir and the St David's Church Choir under the baton of Glen Carter dated from 1975. It featured traditional and contemporary songs. A colour cover photograph of the girls was taken by McPherson Studios, which Gustav Pottyondy sold that year to the Martin family.



Howard's final item was a 1970s St Joseph's Ladies College straw hat made by Effie-Jay, milliners. It belonged to Jacqueline Michaud, whose father Leon managed the Hume Building Society.



The stuffed puppy was made from flour bags, probably by Roma Freeman's grandmother. He would be about 80 years old. During World War II they bought flour in 25 pound (about 11 kg) cotton bags with half a toy printed on the bag so one would have to buy two bags of flour cut out the pieces and sew them together.

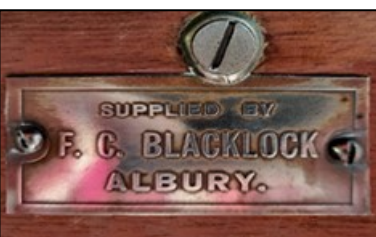
Greg Ryan showed two items. The first was a commemorative \$1 coin that recognises the 150th anniversary (1872–2022) of completion of the Overland Telegraph, said to be the most significant 19th century engineering project in Australia. Completed on 22 August 1872, the line between Adelaide and Darwin was supported by 36,000 poles across 2,839 kilometres.



Greg's second item was a medallion presented in 1859 to Robert Brown, Albury's first European settler (1836). The custodian of the medal is Brown's great great grandson, Brian Mullarvey. Side one is inscribed "Prize Medal Awarded to Rob^t Brown Esq^r For first and only sample of Oranges ever grown in this district Annual Exhibition March 29th 1859" and side two "Albury & Murray River Agricultural and Horticultural Society 1859."

Brown's father Edward, a Dublin blacksmith, had been transported for life to New South Wales in 1823 for "administering an unlawful oath" (as a member of a secretive society said to be opposed to British rule in Ireland). Edward applied for free passage of his family to New South Wales – the application was successful and in 1828 Bridget Brown with her four children, including fifteen year old Robert, arrived in Sydney.

After Robert Brown married Anne Crowe in 1842, he purchased *Collendina* west of Corowa and moved there in 1845 – Brian believes the oranges were grown on *Collendina*.



Peter Whitbourn shared news of a 1924 Tarrant built Model T Ford. The Tarrant Motor Company was the main distributor of Ford motor cars in Victoria. The car (see photo) had turned up at the Victorian Model T Club – it has a Blacklock dash plaque, clearly indicating that the car was originally sold by Blacklocks of Albury.



Text reads: SUPPLIED BY F C BLACKLOCK ALBURY.

David Christy and Natalie Wells from AlburyCity's Planning Department attended our December meeting to explain the latest developments in relation to Heritage listed buildings in Albury.

With Charles Sturt University, AlburyCity is currently undertaking a comprehensive Heritage Review of their Heritage Strategy and Heritage Studies. This is a community-led process with three members of Albury & District Historical Society on the Community Heritage Working Group.

The local community has been asked to nominate items to be considered for listing on Albury's Local Environmental Plan (LEP).

The Heritage Review will also:

- Revise the Heritage Strategy and action plan;
- Update the historical themes;
- Review statements of significance;
- Provide further digital documentation of heritage items (eg photographs or other relevant records).

The review will also make 'house-keeping' amendments to tidy up the current listings – for example some no longer exist (eg Terminus Hotel).

The next step will be preparation of a Draft Heritage Study and Strategy – it will go to the community for comment and possible revisions.

After community feedback, submissions will be reviewed before finalising a Draft Heritage Review and seek Council endorsement.

Features of Heritage Listing

- Heritage listing encompasses four values – historical (items from different eras etc), aesthetic (representative of a particular architectural form), scientific (representing a particular technology or development), social (representing an event of historical value eg formation of Liberal Party at Mate's building).
- Each Heritage item requires an individual Statement of Significance.
- A Heritage Conservation Area is an area that contributes as a group, where there may or may not be individual significance but items relate to each other in an important way.
- Items are listed in the heritage schedule of a Local Environmental Plan which provides legislative protection.

Listings in Albury

Albury Local Government Area (LGA) has one Declared Aboriginal Place, Mungabareena and thirteen sites listed on the State Heritage Register of NSW. Of these, four are also listed on the National Trust of Australia Register and two on the Register of the National Estate.

Albury LGA Items listed on State Heritage Register of NSW are:

- Elm Court, Townsend St;
- Albury Post Office * #;
- The Carriageway, Smollett St;
- Reid's Butcher shop & dwelling *, corner Guinea & David Streets;
- Commercial Hotel & Cottage ("Waterstreet's"), Smollett St;
- Murray River Rail Bridge;
- New Albury Hotel, Kiewa Street;
- Murray Conservatorium (started as Albury Telegraph Office), Dean St;
- Model Store, David Street;
- Bonegilla House *, corner Kiewa & Wyse Streets;
- Albury Railway Station and yard group #;
- The Uiver Collection, Albury Library Museum and
- Bethanga Bridge *.

* Also on the National Trust of Australia Register

Also on the Register of the National Estate

There are 245 listings on Albury's LEP and sixteen Heritage Conservation Areas. Details of all listings can be found at [NSW State Heritage Inventory](#).



Albury Railway Station, State Heritage Listed, on the Register of the National Estate, Local Heritage Item listed on Albury LEP 2010

What requires Council approval if a person owns a listed item?

It does not mean they can never be touched – an item can be sympathetically modernised.

- Additions and front fences typically require a Development Application (DA).
- Written exemption can be provided by Council for minor work, often due to maintenance issues. Examples include like-for-like re-roofing, windows, balustrades, painting, kitchen or bathroom renovations

Council provides an advisory service at no charge, the service cost subsidised by AlburyCity and Heritage NSW

Heritage Considerations

If an item is a State Heritage listing:

- Exceptions can be obtained under the Heritage Act for minor work (eg the roof work at Albury Railway Station).
- Major changes require State Heritage Council approval (eg work at Waterstreet's Commercial Hotel).

If an item is a Local Heritage listing:

- If a Development Application comes in there are specific controls which must be addressed.
- Generally a DA must include a Statement of Heritage Impact. If the work required is major, the impact statement must be submitted by a qualified heritage consultant, then assessed by a heritage advisory service.
- Some properties have a Conservation Management Plan (CMP) which identifies work that can be done into the future to look after the property. A CMP typically includes an outline of future works that are sympathetic and will improve the heritage value of the building (eg Adamshurst).
- If demolition is supported there is a requirement (via a condition of consent) that archival footage of the property is gathered before demolition (eg Bunge Flour Mill).

BONEGILLA @ PIONEER CEMETERY, ALBURY

Bruce Pennay

On Saturday 26 November 2022, four guides from our Society helped nineteen participants locate memorials of people who arrived in Australia via Bonegilla. Society members had selected several marked and unmarked grave sites to explain something of the life experiences of some of Bonegilla's temporary residents during and after the Second World War. The walk was organized to mark the 75th anniversary of the Bonegilla Migrant Reception Centre.

Residents of Bonegilla were usually buried in Victoria, but when their death involved some misfortune that required a coroner to investigate its cause, they were sometimes buried in Albury at what is now called the Pioneer Cemetery.

The tour focused on the northern and eastern perimeters of cemetery. The group visited, the graves of 23 infants who died at Bonegilla in 1949, principally from malnutrition, in what was called at the time a 'health scandal'. Nearby, they were referred to the gravestone of Aleksdras Vasiliauskas, a young Lithuanian who had drowned at Noreuil Park and the unmarked grave of Petro Zarubajko, who had mental health problems and committed suicide. The group visited the sites of Italian soldiers who had been prisoners-of-war at Bonegilla. In the Lutheran section of the cemetery, they saw many gravestones inscribed in German, Latvian, Estonian and Lithuanian languages. They paid respect at the grave site of Ingebord Radevic, who had been murdered by her husband. They paused at the similarly unmarked site of Julija Bebris who drowned at Hume Weir.

The tour began with Anne Hawker telling the group about Bonegilla by explaining her connections with the place. It ended with Lutz Peters similarly explaining his family's connection and telling something about their lives beyond Bonegilla. The Society is grateful that Anne and Lutz agreed to be involved in the walk and to share their stories.

Two of the stories told:

Over 18,000 Italian prisoners-of-war came to Australia between 1941 and 1945. Of the five Italian POW's once buried here the grave chosen for the day's talk was that of 71533 Private Antonio Proparti, Italian Army.

Proparti was born 28/06/1920. According to his war history record he was a single man and was originally a young farmer. He was 5 feet 7 inches tall, had black hair, brown eyes and wore a moustache. His family lived in Altomonte, a small village in an area rich in rivers and hilly landscapes, located in Calabria in Italy's South.

He was captured in January of 1941 in the battle for Bardia and taken as a POW. Bardia was a small harbour town on the Mediterranean coast of Libya and between the 3rd and 5th of January 1941 British and Australian forces captured some 36,000 Italian military personnel.

Proparti was eventually transferred from India to Melbourne in April of 1944. He was formally working on the

Rutherford farm at Henty prior to moving to the Hume camp located on the banks of the Murray.

In late February 1946, the 26-year-old was with a group of prisoners and entered the Murray River below the Hume Weir wall. When he swam to the middle of the stream he apparently tired and disappeared from view. Proparti was not found for 3 days. He was buried on March 6, 1946 nearly a year before the Italian POW's were to be returned to Italy in 1947.

He and all of his Italian colleagues buried in the Albury Pioneer Cemetery were eventually moved to the Italian Ossario at the Murchison cemetery following an exhumation order completed by Lester & Son in February 1961.

It was interesting to note that only the Italian Officers, Majors Gammelli and Morra, received formal graves. Privates including Private Antonio Proparti were interred in unmarked graves in the Pioneer Cemetery.

Chris McQuellin

Howard Jones stood by the graves of baby girls Nadija Bobko and Irene Dzesas as he recalled a little-known child welfare scandal of 1949. No fewer than 23 Bonegilla babies died from illnesses brought on by malnutrition on board migrant ships.



Nadija Bobko

Nadija and Irene were among twelve who died at the Albury District Hospital.

Another ten died at the Bonegilla camp hospital. One baby transferred from Bonegilla to Melbourne and died there.

The tragedy unfolded in winter, with 194 child malnutrition cases admitted to the grossly-understaffed and ill-equipped Bonegilla hospital. Up to 70 lay in cots at any one time. Observers recorded babies were too weak to cry. Some had legs no thicker than a man's thumb.

Anger and condemnation of the scandal as "near murder" led to an official inquiry which absolved Australian health authorities but laid blame on no one. Irene's mother recalled the babies were fed diluted tinned milk on her ship. Only a few babies such as Irene and Nadija lie under gravestones. The majority, aged eight months to 17 months, are in unmarked graves. Incredibly, the deaths were deemed "natural causes," so no inquests were held (more details in Howard's book, *Startling Stories from Albury*).

Howard Jones



A *Border Morning Mail* photo taken at the funeral at Albury Cemetery on April 12, 1945 of Italian POW Major Roderico Gammelli, aged 48, who died of pneumonia. The *Mail* had been asked to take photos to be sent to the Major's family in Italy.

MURRAY RIVER LEECHES

Several newspapers in the 19th century commented on the quality of local leeches. Below is an extract of an article in the Melbourne 'Argus' of April 26, 1870.

"Few persons have any conception of the magnitude of the leech trade. France is said to consume yearly 100 million leeches ... the prime cost of leeches sold in Europe exceeds £2,000,000 per annum. Some parts of Australia abound with leeches, those which frequent the Murray River being preferred by the medical faculty to any other known specimen. They bite freely, and leave no inflammatory wound or mark behind ... contracts with the fishermen in the Murray district for the post season exceeded half a million ... Shipments are made to England, the leeches packed in boxes of soft clay to resemble the muddy bottom of the river."



Visit our website for photos of old Albury, history articles, past Bulletins and much more. Go to:
<https://alburyhistory.org.au/>



Find us on
Facebook

<https://www.facebook.com/Albury.DHS/>

Have you visited our YouTube Channel?

<https://www.youtube.com/channel/UCDzIPypinJegksrO-l2ssVg>



TROVE FUNDING

Below are the leading few paragraphs from an article in 'The Conversation' published on December 23, 2022.

Trove's funding runs out in July 2023

The National Library is threatening to pull the plug on Trove, its free online service that provides public access to collections from Australian libraries, universities, museums, galleries and archives.



In its recent Trove Strategy, the library has indicated that without additional government support, it will shut the service down by July next year:

"The future of Trove beyond July 2023 will be dependent upon available funds ... In a limited funding environment, Trove may reduce to a service focused on the National Library of Australia's collections. Without any additional funds, the Library will need to cease offering the Trove service entirely."

For more detail follow the link: [The Conversation](#)

SHORTAGE OF FEMALES IN ALBURY

According to the *Albury Banner* of September 6, 1862, the population of Albury in 1856 was 645 and in 1861 was 981. No official records remain as they were destroyed in a disastrous fire in Sydney in 1882.

It is probably safe to assume that in the early days of Albury, single men outnumbered single women. The *Border Post* in May 1857 had the following article "Domestic Servants. — The scarcity of female domestics in Albury has now become painfully apparent, and it is a matter of impossibility to procure them at any rate of wages ... should this paragraph meet the eye of Mrs Chisholm, we trust that lady will send us an early consignment of the softer sex."



A *Border Post* advert, May 1859

A&DHS Corporate Sponsors

Albury & District Historical Society receives generous support from the following sponsors.

Please click on the logo to visit their respective websites.



Disclaimer:

The Albury & District Historical Society Inc, and/or its members, through this newsletter, endeavours to provide accurate and reliable information, but does not warrant or make any representation regarding the accuracy or reliability of information contained within this newsletter.

To the maximum extent permitted by applicable law, the Society and/or its members shall not be liable for any damages of any kind relating to the use of this information, including without limitation, direct, indirect, special, compensatory or consequential damages, loss of profits or damage to property, even if the Society and/or its members have been advised of the possibility of such damages.

Patrons: Patricia Gould, Greg Aplin

Honorary Life Members:

Howard Jones, Helen Livsey,
June Shanahan, Jan Hunter.

President: Geoff Romero

Vice-President: Greg Ryan

Secretary: Helen Livsey

alburyhistory@bigpond.com
02 6021 3671

Treasurer: Simon Burgess

Minute Secretary: Yelly Evenhuis

Publicity Officer: Helen Livsey

Public Officer: Helen Livsey

Committee: Jenny Romero, Colin McAulay,
Peter Harper, Steve Judd

Bulletin Editor: Greg Ryan

gmjryan@bigpond.com

Publications & Stock Officer: Colin McAulay

Bulletin dispatch: Richard Lee

Meeting Greeter: Cheryl Bromley

Web Editor: Greg Ryan

Meetings: Second Wednesday of the month
(except January) at 7.30 pm usually at the
Commercial Club Albury.

The Committee meets on the third
Wednesday of the month at 3 pm
at the Albury LibraryMuseum.

ANNUAL SUBSCRIPTION

Single: \$30 Family: \$35

Corporate: \$100

Note: There is a \$10 surcharge for
mailed Bulletins.

Research undertaken, \$25 first
hour. Enquiries in writing with \$25.