

# The Beginnings of Albury High School

*Greg Ryan*

Albury's first State school opened on July 22, 1850 as the National School on the south-east corner of Dean and Kiewa Streets. In 1862 the school moved to Olive Street and became known as the Model School.

The school expanded over time and in February 1888 the *Albury Banner* reported "Albury Public School has been raised to the rank of a Superior Public School, and henceforth the highest class will work up for the Junior University examination."

In October 1909 a school P&C Association was formed with Dr Andrews the first president. They immediately started agitating to form a District School and eventually a High School.

The *Banner* reported in June 1913 that "from July 1 the Albury Superior Public School is to be raised to the dignity of a District School ... the ambition of Albury parents has been to secure a High School for the town, and now that the District School has been secured there is but one step more to be taken. The District School stands between the Superior Public and the High School."

On February 2, 1920 the *Border Morning Mail* informed its young readers that "all the High School pupils and those who have just passed the Qualifying Certificate Examinations, are expected to assemble at the Old Hospital at 9 o'clock this morning. Mr J G Monaghan, MA, formerly headmaster of the Albury District School, has been appointed headmaster of the Albury High School ... There will be over 200 pupils at the High School ... it behoves all who have at heart the educational advancement of the town to be up and doing."

The first home of Albury High School was the old Albury District Hospital on the south-west corner of Thurgoona and Pemberton Streets, next to Albury Gaol and virtually looking down Stanley Street.



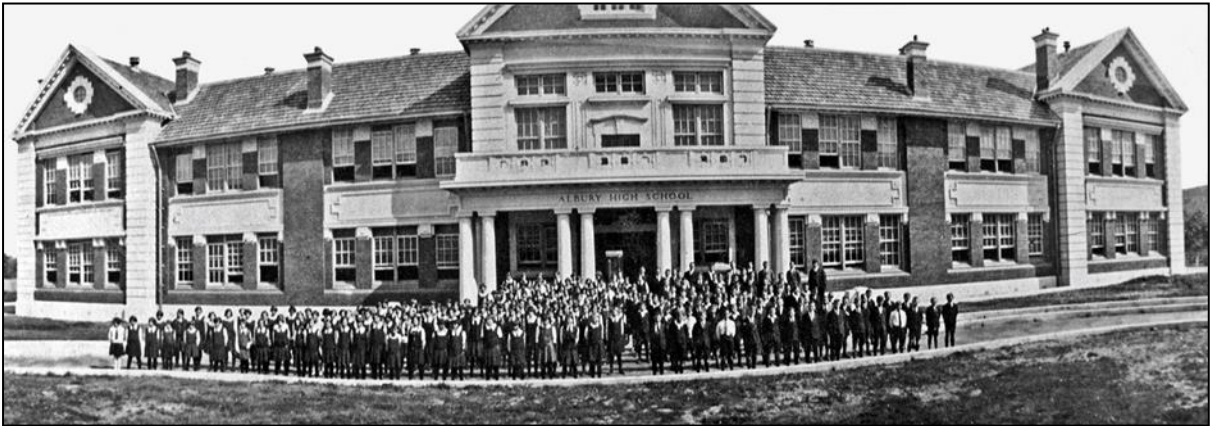
200 pupils assemble on the first day of Albury High School, February 2, 1920 in the old Albury Hospital building, Thurgoona Street.

In April 1920 the first student leaders were announced: "prefects of the Albury High School were chosen by the headmaster and staff as follows: Boys: H Heath, chief prefect and captain of the school; H Taylor, W McKoy, and A Platt, prefects. Girls: Chief girls' prefect, Miss E Fromholz; Miss Bette Thornton and Miss Sadie Broadribb, prefects."

Land in Kiewa Street had been purchased in 1916 for AHS's permanent home. At a cost of £26,137, the building was completed and opened on March 28, 1928 by the Minister for

Education, Hon D H Drummond.

The old hospital building was demolished in 1934.



Pupils assemble at the new Albury High School, Kiewa Street, 1928